

ExTerminate<sup>TM</sup>



**ACCREDITATION MANUAL  
AUSTRALIA**

# ABOUT EXTERMINEX™

Less than a decade ago, Exterminex™ started with a humble beginning and one simple yet powerful word, 'preferred'. Back then, we set off to uncover what each stakeholder looked for in a 'preferred' bait in termite baiting control system, including the arthropod stakeholders – the termites. Equipped with this fundamental, Exterminex™ invested in vigorous and continuous R&D and improvement efforts in the quest to design and develop a 'preferred' bait in the termite baiting control system.

Formulated in Australia, Exterminex™ bait is one of the most attractive termite baits available, containing highly refined most preferred natural form of alpha cellulose matrix, bait fortified with alluring compounds and feeding stimulants. Exterminex™ provides pest control operator the complete freedom of use for Stage 1 Treatment or Stage 2 Management without any site fees.

Exterminex™ is proud to offer a comprehensive 'preferred' solution in termite baiting control system to Australia wide, including baits, stations, monitoring systems, tracking systems and DNA identification systems. Each of these components were meticulously designed and developed to cater for the ever changing and highly intelligent subterranean termites.

Exterminex™ bait is a powerful tool for professional pest controller and it does what it should, colony elimination!

Since 2011, Exterminex™ has been protecting buildings, homes and structures from termite infestations in Australia, Malaysia, Singapore, Hong Kong, Thailand, Cambodia, Vietnam and Pakistan to name a few. Each time where there is a termite infestation and when Exterminex™ is called upon, Exterminex™ leaves behind footprints of satisfied professional and home owners.

Exterminex™ is available exclusively at Globe Pest Solutions to licensed pest control operators. Please visit your nearest Globe store for further information.



YOUR TRUSTED BRAND IN TERMITE PROTECTION  
[www.exterminex.com.au](http://www.exterminex.com.au)

# OUR EXTERMINEX™ PRODUCTS

## Complete Range

Exterminex™ termite baiting system provides a complete range of products to professional pest control operators. Our products include in-ground monitoring stations, in-concrete monitoring stations, above-ground bait stations and Exterminex™ termite bait to ensure total colony elimination.



## High Quality

Exterminex™ products are delivered in professional packaging for ease of handling. Exterminex™ baits are individually sealed in 100g portions to ensure freshness and palatability. Each baits packaging have unique bar code which prove the product originality and also prevent black market sale.

Exterminex™ monitoring and bait stations are durable and long lasting. The Exterminex™ monitoring wood blocks and monitoring stations are used together for detecting early termite foraging activity within the perimeter of the property. The Exterminex™ monitoring wood blocks are specifically manufactured using termite prone timber which are attractive to termites. In general, protection against damage by termites on a cellulose-based material is safer and focuses on colony elimination where traditional chemicals may not. This lowers the risk of reinfestation.

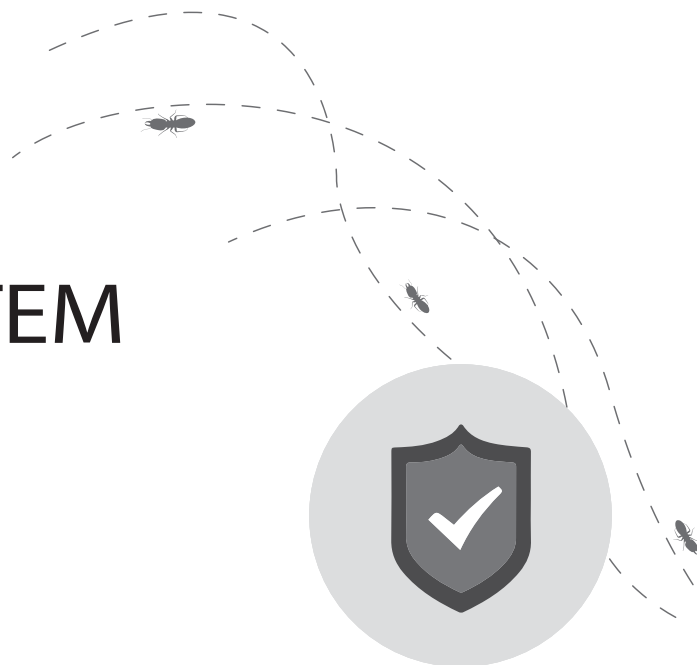
## Easy Installation

Installation of Exterminex™ products are easy and not time consuming with minimal interruption to the owners' properties while meeting the requirement of properties owner and pest control operators.





# READY TO INSTALL RTI - DUO 80MM IN GROUND MONITORING SYSTEM



## EASY 3 STAGE INSTALL

80mm In Ground Bait Station  
provides a 3-Quick stage install.  
Clip, Slip & Drop.

Duo Timber Type  
*Pinus Radiata* and  
*Eucalyptus Regnans*  
Soft wood and Hardwood.

Kits of 16 are pre loaded  
with timber, sand sleeve  
attractant and a durable notice



## Effective

Exterminex™ bait shows 99% strike rate as installation was done by following the recommendations. The baiting system also show no bait shyness, providing consistent efficacy which results in fewer reworks and reinfestation of termites. The pure form non-bleached bait matrix of the Exterminex™ bait contains feeding stimulants and attractant resulting in non-reluctant or hesitation for the subterranean termites to consume them.

## Timber Secure Rapid Approved Insurance

Exterminex™ is Rapid Insurance approved for the Timber Secure \$100,000 warranty to Rapid insured customers. Contact Rapid Solutions for further details.

## ServiceM8 Integration

Exterminex™ provides baiting system inspection forms and templates for ServiceM8.



## Training & Site Tenders

Exterminex™ takes training and company development seriously. Exterminex™ provide bi annual workshops that can assist with staff training and development. Exterminex™ can assist our dedicated clients with onsite tenders to help your company win quotes. In addition, our in house entomologist is on hand to help with any questions.

## Highly Palatable

Once termites start feeding on Exterminex™ bait, they will not be able to resist. Exterminex™ bait is one of the highest palatable baits on the market. This is due to our unique brown natural bait formulation. Exterminex™ is giving PCOs the confidence to use bait to treat termite's infestation at initial stages knowing that when they return, the bait is consumed and the termites will be eliminated.

## Colony Elimination

Typically eradicates termite by eliminating the colony within 4 to 16 weeks. Exterminex™ complies with Australian Standard AS3660 and prioritises colony elimination. Exterminex™ can guarantee your treatment "Takes it back to the nest". Obtaining colony elimination will provide confidence in reducing the risk of re infestation or locking termites into the building.

## No Site Fees & Freedom of Use

With Exterminex™, we do not charge for site fees. We encourage and promote colony elimination in any stage. We believe it is important to obtain colony elimination first and then it is up to the professional operator with whom they share their database with and how they protect building afterwards.

## Safe & Environmentally Friendly

Exterminex™ contains a very specific and proven active chlorfluazuron, highly effective against infesting termites only. It has extremely low mammalian toxicity; accidental poisoning during handling and installation is virtually impossible. Exterminex™ bait is targeted specifically against subterranean termites. Please refer to our label on how to safely apply and use the product.

**Exterminex Termite Baiting System**

**ExTerminex**  
www.exterminex.com.au

**Termite Management Notice**  
In accordance with Australian Standard AS3602-2017  
Termite management Part 2: In and around existing buildings and structures

Certificate of Installation / Reference No. \_\_\_\_\_ Date of Commencement \_\_\_\_/\_\_\_\_/\_\_\_\_

Property Address \_\_\_\_\_

Exterminex In Ground Baiting (\*System)    **In Ground** \_\_\_\_\_    **In Concrete** \_\_\_\_\_

**DO NOT DISTURB THE UNITS / REPORT ANY PROBLEMS PROMPTLY**


**Important:** The installation is intended to minimise the risk of serious damage to the structure from subterranean termites. To function, this baiting system must be properly maintained. Baiting systems require ongoing inspection, maintenance and the application of bait as required. The system will typically comprise of a series of lures around the structure at approximately 3 metre intervals. This spacing is generally sufficient to intercept active termites but may be varied as required by local conditions.


The Exterminex system is intended to be installed and maintained by a suitably trained and skilled person. Interference by unskilled persons may prevent success. Inspections will normally be occurring, as contracted, every month and a half. This frequency will be varied as necessary, for example, more frequent inspections may be done during warmer months, after bait is added or when the risks are assessed as very high. Contact your installer immediately if the site is subject to disturbance such as earthworks, fire, flooding or pesticide. When the inspector recognises appropriate evidence of termite activity, the Exterminex bait will be applied. The timber in the stations will normally be replaced every year and more frequently where there is excessive decay or mould.

**Important:** In addition to maintenance inspections of the system, full inspections of the structures at risk are required. AS 3602-2017 sets the interval between these thorough inspections by a competent person as not more than 12 months, with more frequent inspections required where the structure is assessed as being at a higher than normal risk. The installer/inspector's recommendations for inspection and maintenance have been provided.

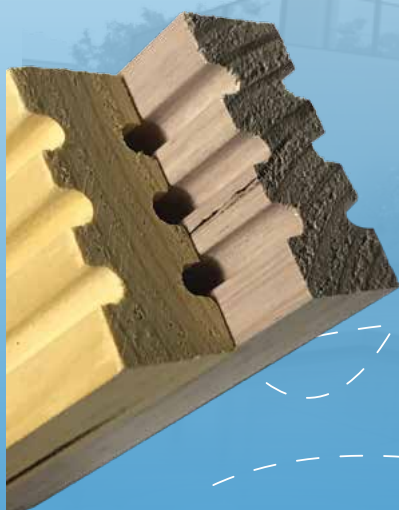
Inspection Frequency To The Structure Recommended every \_\_\_\_\_ Months

Inspected	Inspected	Inspected
Inspected	Inspected	Inspected



 **Maintain termite inspections to this property as recommended by the installer**  
**Accredited Installer:** \_\_\_\_\_

For general information on the Exterminex system visit [www.exterminex.com.au](http://www.exterminex.com.au)  
EXTERMINEX is used in AUSTRALIA, CAMBODIA, MALAYSIA, HONG KONG, PAKISTAN, THE PHILIPPINES, SINGAPORE, THAILAND



# SYSTEM INSTALLATION & MANAGEMENT

The Exterminex™ termite management system is provided in packs of 16 that are ready to install. The system also includes 2 timber interceptors per station. The timber interceptors are kiln dried 1 hardwood and softwood that is highly palatable to subterranean termite species in Australia.

The Exterminex™ baiting system has a size of 80mm which is an ideal size; easy to install and maintain. The Exterminex™ system has large round holes that provide exposure to the timber. In addition, Exterminex™ baiting stations come packed with a sand sleeve that will help settle soil during the first few months of install, prolong the life of the timber, keep soil out and also encapsulate the station acting as an attractant. Tests have concluded that stations installed with the Exterminex™ sand sleeves attract more termites, quicker.

## Exhibit A

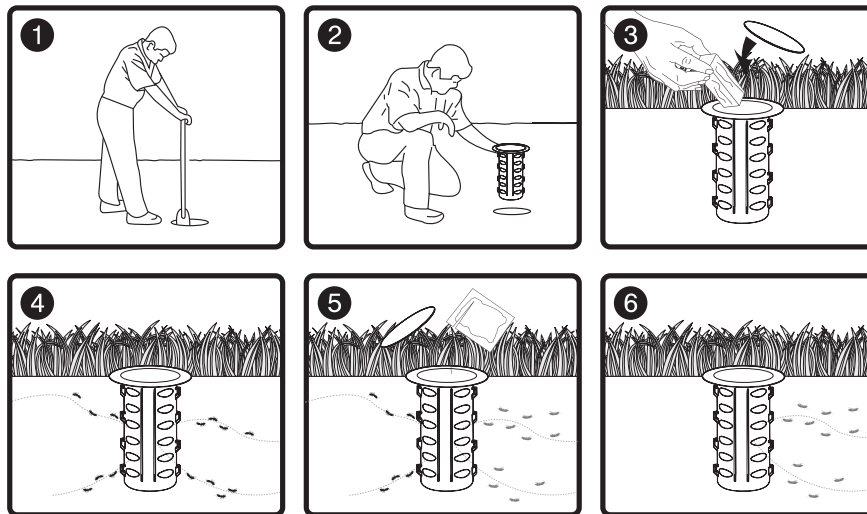


Exhibit A is an illustration of how Exterminex™ In Ground (IG) bait station is being installed around your building. Approximately 3 meters apart surrounding your home. Once this has been installed, monitoring begins every 6-8 weeks.

The Exterminex™ system requires inspections every 6-8 weeks and once termites are intercepted, Exterminex™ bait is installed. The system is installed in 3 meters intervals. Exterminex™ provide an auger for installing the stations.

## DOs

Use an auger to install the stations every 3 meters around the structure just out from the drip line. If concrete is present you can core drill the concrete and install an Exterminex™ IC pot covers.

Always replace the timber every 6 months and use the extractor tool to clean stations. Termites will not consume the timber if it is too decayed and or waterlogged. A simple zip tie can be installed to the timber to allow ease of removal.

Always install the monitoring stations below soil surface. This will ensure ants and other insects do not enter the stations. If ants are identified, apply ant gel at the top and around the station.

Always keep track of monitoring. Exterminex™ provide monitoring templates and also compatible with ServiceM8 integration.

Inspections for the monitoring stations should be done in every 6-8 weeks.

Always replace damaged or missing stations.

Inform client where you have installed the system so that they know what to look out for when mowing or lawn care. Make sure to also inform client not to open or interfere with the stations.

## DON'Ts

Leave the monitoring stations opened without its cover.

Use other type of timber or put along other materials such as newspaper inside the stations. This actions may interfere current treatment done.

Did not take note the locations of the installed monitoring stations.





# BAIT INSTALLATION, STORAGE & MANAGEMENT

DOs	DONTs
Exterminex™ products should be stored in an airtight container, locked in a dark cool place that complies with current legislation.	Do not store the products in your chemical cabinet with other chemicals as the odours and particles from your general pest products can cross contaminate the bait rendering it ineffective.
Make sure your hands are clean and wearing gloves. If you are using soap to wash your hands, make sure to wash thoroughly and leave no odour.	Do not smoke before handling Exterminex™ products. Odours cigarettes smoke, from food or other chemicals must not cross contaminate the bait.

## Exhibit B

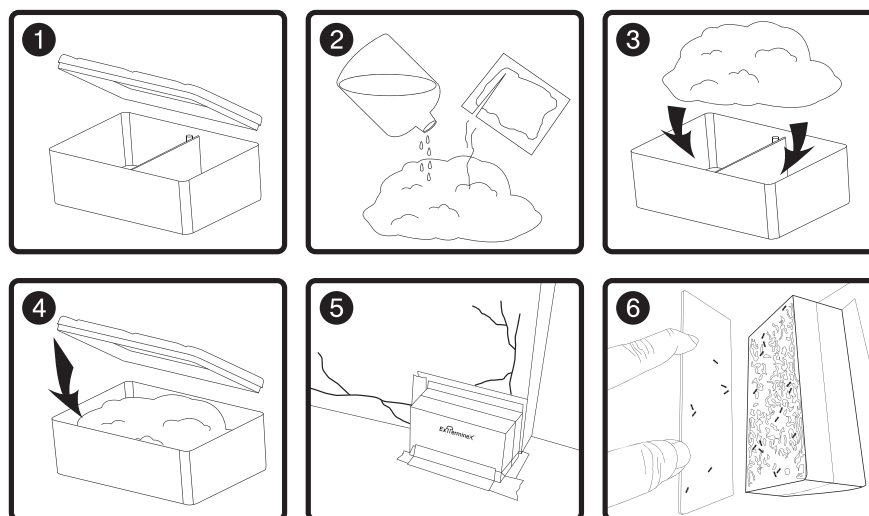


Exhibit B represents Exterminex™ Above Ground (AG) bait station. Simple and easy 6-step procedure to install on infested walls or fixtures. Soon enough, termites will start entering and feeding on the unique and proven termite bait.

Some species of termites such as *Coptotermes acinaciformis* have known to empty a 100g bait box in approximately 7 days. It is important to ensure more than 1 bait is installed with visits not extending more than 14 days. In some situations the bait boxes can be doubled up with twice the amount of bait installed with 2 stations attached together.

In some instances some species of termites such as *Coptotermes frenchi* spp. and *Shedorhinotermes* spp. can be slow feeding. It is important also in this instance to ensure as many baits are installed and patience is maintained. Mould is a common part of the baiting process and baits should not be discarded if blue or red mould is identified. Ensure to notify the client where the bait boxes are and not to be disturbed.

# REMINDER & CRITICAL NOTES

- Colony elimination signs are when soldier caste out numbers worker caste, mites and flies appear, alates group in the AG stations.
- Be patient with baiting
- Always keep track of monitoring times to ensure maintain feeding.
- Never use Exterminex™ bait that was not purchased direct from Globe Distribution Australia. All Exterminex™ bait is individually bar-coded.
- Carry out a termite inspection in accordance with AS3660 prior to installation and use a termite radar device or non-invasive tool to detect “hot spots” areas to apply baits.
- Never split a bag. Only use bait in the same bag for each station.
- Never mix Exterminex™ bait with other brands of bait or chemicals.
- Always remove the AG stations and clean the area once complete

## DOs

Use 180mm - 220mm of de-mineralised water or battery water to form a consistent dough. (200mm) Most common mix. Dryer for C.Frenchi & Nasutitermes.

Mix the bait and keep it in the bag when applying. This will keep the moisture in the bait and stop it drying out.

Use tear-able cloth tape to seal the bait bag at the opening and also to affix stations to prevent light entering the stations.

Inspect AG stations every 2 weeks and 3 weeks once intoxication is observed. Bait boxes can be double stacked to apply twice the bait.

Always wash your hands, wear fresh gloves when applying the bait and store the products away from things that may contaminate such as chemicals.

## DON'Ts

Do not use tap, filtered or mineral water as these type of water contain foreign that may alter the bait nature.

Do not discard bait if red or green mould is identified at later stages. If black mould is identified at first visit and termites have not taken to the bait it could indicate cross contamination or may be installed in the wrong are where worker termites are not feeding. Simply remove and replace the bait or relocate to another hot spot.

Do not smoke with gloves on.

# PRODUCT DESCRIPTION AND IMAGES



## Above ground bait station box

Product consist of base unit, cover, divider and 2-piece security screws  
36 stations per box



## Above ground bait station each

Product consist of base unit, cover, divider and 2-piece security screws  
Sold individually



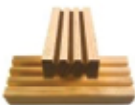
## In-ground bait station (80mm) Ready To Install Kit RTI -DUO

Product consist of cover, base unit, timber pre loaded, sand sleeve attractant and a durable notice  
16 stations per box



## In-ground bait station (80mm) Replacement

Product consist of cover, base unit  
16 stations per box



## In-ground interceptor/ wood (80mm)

Product consist of a 2-piece luring wood impregnated with luring compound  
16 sets/box



## Key Opener

Specially designed, tamper proof In-Ground bait station cover opener  
Sold individually



## In Concrete Pot Cover

Specially designed stainless steel In Concrete Pot Cover for cemented grounds  
Sold individually



## IG Sleeves Replacement

In-Ground sleeves specifically designed to prolong wood shelf life  
Sold in 16 per pack



## DNA Test Kit

DNA Diagnostic Kit to prove with science  
Box of 30 vials



## Trekker Bait Night Eye

Product consists of 1 AG station and 50g Exterminex™ bait with 0% Active with fluorescent properties  
1 Above ground station with bait



## Exterminex™ Bait

Highly palatable natural form cellulose termite bait with active chlorfluazuron also containing alluring compounds and feeding stimulants.  
3KG Box with 30 X 100G Portions

PROVEN. SAFE. GREEN. TRUSTED



## CONTACT US

### **Exterminex Australia - Support**

Suite 366, Clunies Ross Court  
Eight Mile Plains, QLD, 4113  
Australia

**T** 1300 822 282

**E** [contact@exterminex.com.au](mailto:contact@exterminex.com.au)

### **Globe Pest Solutions - Sales & Distribution**

Unit B2a 3-29 Birnie Ave, Licombe,  
NSW, 1811  
Australia

**T** 02 9395 1205

**E** [pestsales@globeaus.com.au](mailto:pestsales@globeaus.com.au)

**globe**  
PEST SOLUTIONS

or visit us at [www.exterminex.com.au](http://www.exterminex.com.au).

Illustrations, descriptions and specifications. The catalogue was correct at the time of going to print. Exterminex™ Australia however reserves the right to change specifications, colours and prices of the products listed in this publication at any time. For the latest details and promotions, please contact your friendly Exterminex™ distributor.