

ExTerminexTM



TRAINING MANUAL AUSTRALIA

ABOUT EXTERMINEX™

Less than a decade ago, Exterminex™ started with a humble beginning with one simple yet powerful word, 'preferred'. Back then, we set off to uncover what each professional looked for in a 'preferred' bait within the baiting sector, including the arthropods– the termites. Equipped with these fundamentals, Exterminex™ invested in vigorous and continuous R&D and improvement efforts in the quest to design and develop a 'preferred' bait.

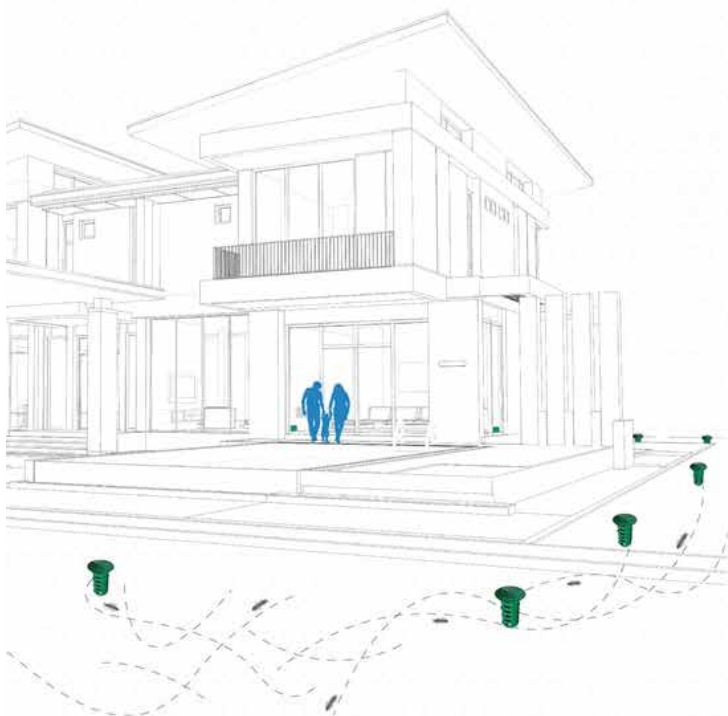
Formulated in Australia, Exterminex™ bait is one of the most attractive termite baits available. Why? Exterminex is a natural ground timber, highly refined and most preferred form of alpha cellulose bait matrix. Exterminex is fortified with alluring compounds and feeding stimulants. Exterminex™ provides pest control operators the complete freedom of use for Stage 1 Treatment or Stage 2 Management without any site fees or lock in costs.

Exterminex™ is proud to offer a comprehensive 'preferred' solution in termite baiting Australia wide, including baits, stations and monitoring systems with professional support from experts in the field. Each of these components have been meticulously designed and developed to cater for the ever changing and highly intelligent subterranean termites.

Exterminex™ bait is a powerful tool for professional pest controller and it does what it should, Colony elimination!

Since 2011, Exterminex™ has been protecting buildings, homes and structures from termite infestations in Australia, Malaysia, Singapore, Hong Kong, Thailand, Cambodia, Vietnam and Pakistan to name a few. Each time where there is a termite infestation and when Exterminex™ is called upon, Exterminex™ leaves behind footprints of satisfied professional and home owners.

Exterminex™ is available to licensed pest control operators only.



ExTerminex™

YOUR TRUSTED BRAND IN TERMITE PROTECTION
www.exterminex.com.au

OUR EXTERMINEX™ PRODUCTS

Complete Range

Exterminex™ termite baiting system provides a complete range of products to professional pest control operators. Our products include in-ground monitoring stations, in-concrete monitoring stations, above-ground bait stations and Exterminex™ termite bait to ensure total colony elimination.



High Quality

Exterminex™ products are delivered in professional packaging for ease of handling. Exterminex™ baits are individually sealed in 100g Zip Lock portions to ensure ease of application, freshness and palatability. Each bait is packaged with a unique bar code which proves the products originality and also prevents black market sales.

Exterminex™ monitoring and bait stations are durable and long lasting. The Exterminex™ monitoring wood blocks and monitoring stations sourced in Australia are used together for detecting early termite foraging activity within the perimeter of the property. The Exterminex™ monitoring wood blocks are specifically manufactured using termite prone timber which is highly attractive to termites. In general, protection against damage by termites on a cellulose-based material is safer and focuses on colony elimination where traditional chemicals may not. This lowers the risk of re-infestation.

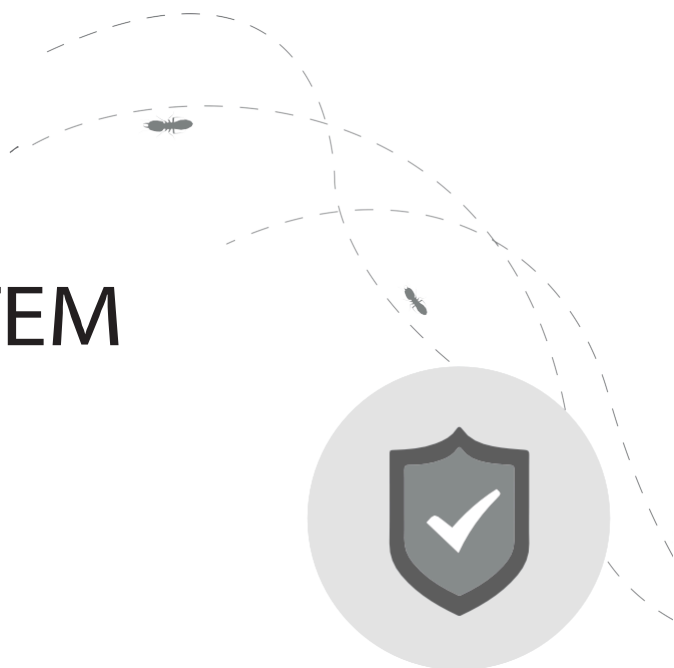
Easy Installation

Installation of Exterminex™ products are easy and not time consuming with minimal interruption to the owners' properties while meeting the requirement of properties owner and pest control operators.





READY TO INSTALL RTI - DUO 80MM IN GROUND MONITORING SYSTEM



EASY 3 STAGE INSTALL

80mm In Ground Bait Station
provides a 3-Quick stage install.
Clip, Slip & Drop.

Duo Timber Type
Pinus Radiata and
Eucalyptus Regnans
Soft wood and Hardwood.

Kits of 16 are pre loaded
with timber, sand sleeve
attractant and a durable notice



TimberSecure
TERMITE INSURANCE
APPROVED SYSTEM

Effective

Exterminex™ bait shows 99% strike rate if installation is carried out using the following the recommendations. The baiting system also shows no bait shyness, providing consistent efficacy which results in fewer reworks and re-infestation of termites. The pure form non-bleached bait matrix of the Exterminex™ bait contains feeding stimulants and attractants resulting in non-reluctant or hesitation for the subterranean termites to consume the product.

ServiceM8 & Pest Register Integration

Exterminex™ provides baiting system inspection forms and templates for ServiceM8 & Pest Register.



Training & Site Tenders

Exterminex™ takes training and company development seriously. Exterminex™ provide bi annual workshops that can assist with staff training and development. Exterminex™ can assist our dedicated clients with onsite tenders to help your company win quotes. In addition, our in house entomologist is on hand to help with any questions if you require.

Highly Palatable

Once termites start feeding on Exterminex™ bait, they will not be able to resist. Exterminex™ bait is one of the highest palatable baits on the market. This is due to our unique brown natural bait formulation. Exterminex™ is giving PCOs the confidence to use bait to treat termite's infestation at initial stages knowing that when they return, the bait is consumed and the termites will be eliminated. Elimination by baiting with Exterminex™ as apposed to foam or dust treatments prior to the installation of perimeter chemical treated zones highly reduces the risk of re infestation.

Colony Elimination

Exterminex™ typically eradicates termites by eliminating the colony within 4 to 16 weeks depending on colony size and time of year. Exterminex™ complies with Australian Standard AS3660 and prioritises colony elimination in a safe manner. Exterminex™ can guarantee your treatment "Takes it back to the nest". Obtaining colony elimination will provide confidence in reducing the risk of re infestation or by locking termites into the building with repellants or chemical.


No Site Fees & Freedom of Use

Every site and situation is different! With Exterminex™, we do not charge for site fees or require you to install in-ground stations. We encourage and promote colony elimination in any stage. We believe it is important to obtain colony elimination first and then it is up to the professional operator with whom they share their database with and how they protect the building afterwards.

Safe & Environmentally Friendly

Exterminex™ contains a very specific and proven active chlorfluazuron, highly effective against infesting termites only. It has extremely low mammalian toxicity; accidental poisoning during handling and installation is virtually impossible. Exterminex™ bait is targeted specifically against subterranean termites. Please refer to our label on how to safely apply and use the product.

Exterminex Termite Baiting System



Termite Management Notice

In accordance with Australian Standard AS3660.2-2017
Termite management Part 2: In and around existing buildings and structures

Certificate of Installation / Reference No: _____ Date of Commencement ____/____/____

Property Address _____

☐ Exterminex In Ground Baiting ("System") ☐ In Ground ☐ In Concrete

DO NOT DISTURB THE UNITS / REPORT ANY PROBLEMS PROMPTLY


Important: The installation is intended to minimise the risk of serious damage to the structure from subterranean termites. To function, this baiting system must be properly maintained. Baiting systems require ongoing inspection, maintenance and the application of bait as required. The system will typically comprise of a series of lures around the structure at approximately 3 metre intervals. This spacing is generally sufficient to intercept active termites but may be varied as required by local conditions.


The Exterminex system is intended to be installed and maintained by a suitably trained and skilled person. Interference by unskilled persons may prevent success. Inspections will normally be occurring, as contracted, every month and a half. This frequency will be varied as necessary, for example, more frequent inspections may be done during warmer months, after bait is added or when the risks are assessed as very high. Contact your installer immediately if the site is subject to disturbance such as earthworks, fire, flooding or pesticide. When the inspector recognises appropriate evidence of termite activity, the Exterminex bait will be applied. The timber in the stations will normally be replaced every year and more frequently where there is excessive decay or mould.

Important: In addition to maintenance inspections of the system, full inspections of the structures at risk are required. AS 3660.2-2017 sets the interval between these thorough inspections by a competent person as not more than 12 months, with more frequent inspections required where the structure is assessed as being at a higher than normal risk. The installer/inspector's recommendations for inspection and maintenance have been provided.

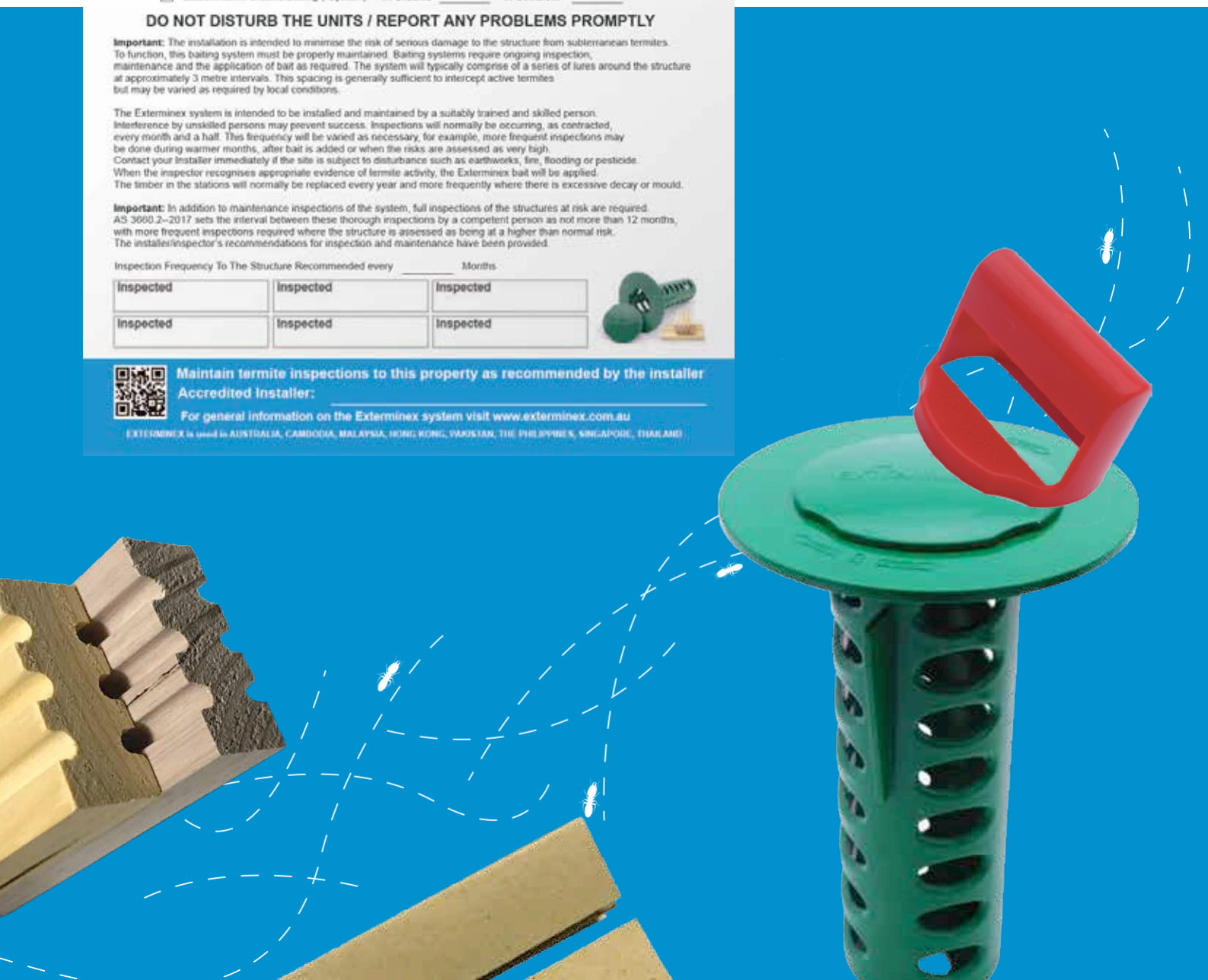
Inspection Frequency To The Structure Recommended every ____ Months

Inspected	Inspected	Inspected
Inspected	Inspected	Inspected





Maintain termite inspections to this property as recommended by the installer
Accredited Installer: _____
For general information on the Exterminex system visit www.exterminex.com.au
EXTERMINEX is used in AUSTRALIA, CAMBODIA, MALAYSIA, HONG KONG, PAKISTAN, THE PHILIPPINES, SINGAPORE, THAILAND



SYSTEM INSTALLATION & MANAGEMENT

The Exterminex™ termite management system is provided in packs of 16 that are ready to install. The system also includes 2 timber interceptors per station. The timber interceptors are kiln dried 1 hardwood and softwood that is highly palatable to subterranean termite species in Australia.

The Exterminex™ baiting system has a size of 80mm which is an ideal size; easy to install and maintain. The Exterminex™ system has large round holes that provide exposure to the timber.

In addition, Exterminex™ baiting stations come packed with a sand sleeve that will help settle soil during the first few months of install, prolong the life of the timber, keep soil out and also encapsulate the station acting as an attractant. Tests have concluded that stations installed with the Exterminex™ sand sleeves attract more termites, quicker.

Exhibit **A**

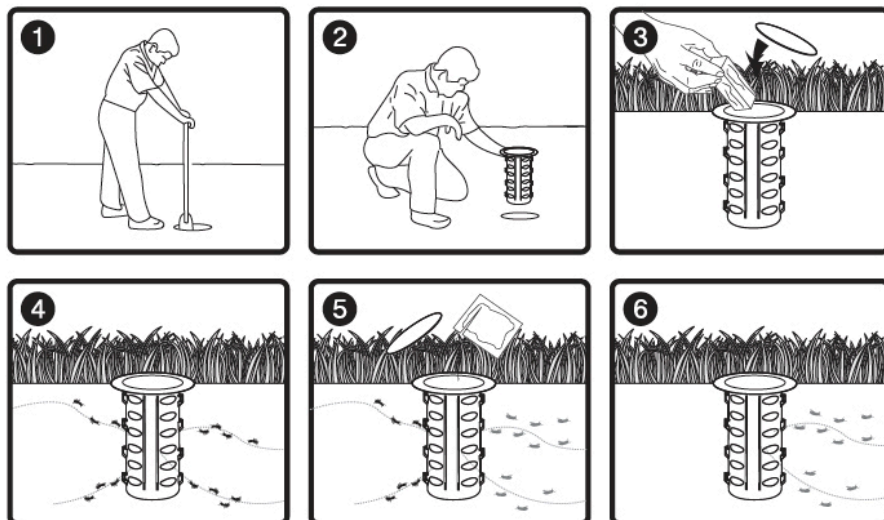


Exhibit **A** is an illustration of how our Exterminex™ In Ground (IG) Bait Station is being installed around your building. Approximately 3 meters apart surrounding your home. Once this has been installed, monitoring then begins.

The Exterminex™ system requires inspections every 6-8 weeks and once termites are intercepted, Exterminex™ bait is installed. The system is installed in 3 meters intervals. Exterminex™ provide an auger for installing the stations. Interceptors should be replaced every 6 months.

Exterminex IG stations can be purchased direct from www.exterminex.com.au

IN GROUND STATION - DO's

Use an auger to install the stations every 3 meters around the structure just out from the drip/ gutter line in a straight and tidy manner. If concrete is present you can core drill the concrete and install an Exterminex™ IC pot covers.

Always replace the timber every 6 months and use the extractor tool to clean stations. Termites will not consume the timber if it is too decayed and or waterlogged. A simple zip tie can be installed to the timber to allow ease of removal.

Always install the monitoring stations below soil surface. This will ensure ants and other insects do not enter the stations. If ants are identified, apply ant gel at the top and around the station.

Always keep track of monitoring. Exterminex™ provide monitoring templates and also compatible with ServiceM8 & Pest Register APP integration.

Inspections for the monitoring stations should be done in every 6-8 weeks.

Always replace damaged or missing stations.

Inform your client where you have installed the system so that they know what to look out for when mowing or lawn care. Make sure to also inform client not to open or interfere with the stations.

IN GROUND STATION - DON'Ts

Leave the monitoring stations opened without its cover.

Use other type of timber or put along other materials such as newspaper inside the stations. This actions may interfere current treatment done.

Do not forget to take note of the locations where you have installed the monitoring stations.



BAIT INSTALLATION, STORAGE & HANDLING

BAIT HANDLING DO's	BAIT HANDLING DON'Ts
Exterminex™ products should be stored in an airtight container, locked in a dark coolplace that complies with current legislation.	Do not store the products in your chemical cabinet with other chemicals as the odours and particles from your general pest products can cross contaminate the bait rendering it ineffective.
Make sure your hands are clean and you wear gloves. If you are using soap to wash your hands, make sure to wash thoroughly and leave no odor. Use demineralised water.	Do not smoke before handling Exterminex™ products. Odors from cigarettes smoke, food or other chemicals must not cross contaminate the bait.

Exhibit B

* Use 180-220mm demineralized water per 100g pack for best results keep bait in bag and apply to activity.

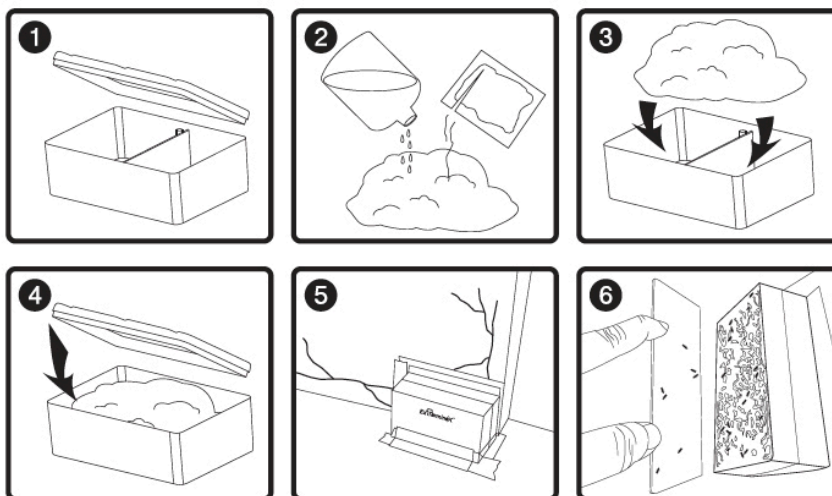


Exhibit B represents our Exterminex™ Above Ground (AG) Bait Station. Simple and easy 6 step procedure to install on infested walls or fixtures. Soon enough, termites will start entering and feeding on our unique and proven termite bait.

Some species of termites such as ***Coptotermes acinaciformis*** commonly consume a 100g Exterminex baitbox in approximately 3-7 days. It is important to ensure more than 1 bait is installed with visits not extending more than 14 days. In some situations the bait boxes can be doubled up with twice the amount of bait installed with 2 stations attached together.

In some instances some species of termites such as ***Coptotermes frenchi*** spp. and ***Shedorhinotermes*** spp. can be slow feeding or timid. It is important also in this instance to ensure as many baits are installed, stations are affixed with no gaps and patience is maintained. Mould is a common part of the baiting process and baits should not be discarded if blue or red mould is identified. Ensure to notify the client where the bait boxes are and not to be disturbed.

REMINDER & CRITICAL NOTES

- Colony elimination signs are when soldier caste out numbers worker caste, mites and flies appear, alates group in the AG stations.
- Be patient with baiting
- Always keep track of monitoring times to ensure maintain feeding.
- Never use Exterminex™ bait that was not purchased direct from the supplier or distributor.
- Carry out a termite inspection in accordance with AS3660 prior to installation and use a termite radar device or non-invasive tool to detect “hot spots” areas to apply baits.
- Never split a bag. Only use bait in the same bag for each station.
- Never mix Exterminex™ bait with other brands of bait or chemicals.
- Always remove the AG stations and clean the area once complete

ABOVE GROUND BAITING - DOs

Use 180mm – 220mm of de-mineralised water or battery water to form a consistent dough. (200mm) Most common mix. Dryer for C.Frenchi & Nasutitermes. Not crumbly & not soupy. Dough like.

Mix the bait and keep it in the Zip Lock bag when applying. This will keep the moisture in the bait and stop it drying out. Simply mix and cut hole with sharp blade and apply to workings.

Use quality tear-able cloth tape to affix stations to surfaces. This will prevent light and other pests such as ants entering the stations. If an AG station cannot be installed due to surface, direct application of bag can be applied however ensure covered by dark material such as black plastic.

Inspect AG stations every 2 weeks and 3 weeks once intoxication is observed. Bait boxes can be double stacked to apply twice the bait.

Always wash your hands, wear fresh gloves when applying the bait and store the products away from things that may contaminate such as chemicals.

ABOVE GROUND BAITING - DONTs

Do not use tap, filtered or mineral water as these type of waters may contain foreign that may alter the bait nature.

Do not discard bait if red or green mould is identified at later stages. If black mould is identified at first visit and termites have not taken to the bait it could indicate cross contamination or may be installed in the wrong area where worker termites are not feeding. Simply remove and replace the bait or relocate to another hot spot.

Do not smoke with gloves on.

COLONY ELIMINATION SUCCESS SIGNS

Please note that success signs of colony elimination may vary from one case to another. Below are the common signs that can be observed upon termite colony elimination using Exterminex™ Termite Baiting System



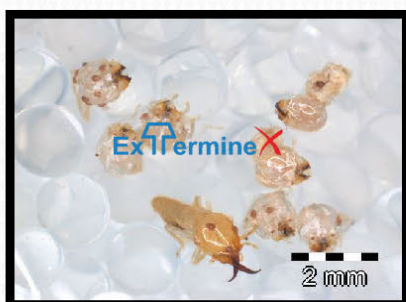
- 1 Dead termite soldiers observed inside the station or mud trails nearby. This can indicate the colony has collapsed.



- 2 Excessive growth of fungus on the bait. This can indicate that the worker population has crashed and that there is a lack of workforce for sanitary duty and to maintain a clean environment



- 3 No signs of live termites inside the stations or mud trails nearby. No activity on radar, no clicking sounds nearby.



- 4 Presence of termitophile (parasite) inside the stations. As the treatment approaches colony elimination, termitophiles emerge from underground and parasitically feed on weakened termites or readily decomposed materials.



PRODUCT DESCRIPTION AND IMAGES



Above ground bait station box

Product consist of base unit, cover, divider and 2-piece security screws
36 stations per box



Above ground bait station each

Product consist of base unit, cover, divider and 2-piece security screws
Sold individually



In-ground bait station (80mm) Ready To Install Kit RTI -DUO

Product consist of cover, base unit, timber pre loaded, sand sleeve attractant and a durable notice
16 stations per box



In-ground bait station (80mm) Replacement

Product consist of cover, base unit
16 stations per box



In-ground interceptor/ wood (80mm)

Product consist of a 2-piece luring wood impregnated with luring compound
16 sets/box



Key Opener

Specially designed, tamper proof In-Ground bait station cover opener
Sold individually



In Concrete Pot Cover

Specially designed stainless steel In Concrete Pot Cover for cemented grounds
Sold individually



IG Sleeves Replacement

In-Ground sleeves specifically designed to prolong wood shelf life
Sold in 16 per pack



DNA Test Kit

DNA Diagnostic Kit to prove with science
Box of 30 vials



Trekker Bait Night Eye

Product consists of 1 AG station and 50g Exterminex™ bait with 0% Active with fluorescent properties
1 Above ground station with bait



Exterminex™ Bait

Highly palatable natural form cellulose termite bait with active chlorfluazuron also containing alluring compounds and feeding stimulants.
3KG Box with 30 X 100G Portions

PROVEN. SAFE. GREEN. TRUSTED



CONTACT US

Exterminex Australia - Support

Suite 366, Clunies Ross Court
Eight Mile Plains, QLD, 4113
Australia

T 1300 822 282

E contact@exterminex.com.au

Available at

or visit us at **www.exterminex.com.au**.

Illustrations, descriptions and specifications. The catalogue was correct at the time of going to print. Exterminex™ Australia however reserves the right to change specifications, colours and prices of the products listed in this publication at any time. For the latest details and promotions, please contact your friendly Exterminex™ distributor.